



DLG
SHAPE

Building Spaces. Building Lives.



DLG SHAPE is a majority Indigenous owned business that provides construction fitout and refurbishment services across Australia for both government and private sector clients.

Whilst a large proportion of our work is with Federal and State Governments, we bring spaces to life for a wide variety of end uses including offices; hospitals; educational facilities; hotels; retail; and, public use environments.



DLG SHAPE BOARD

David Liddiard, OAM, Chairman (pictured above)
Michael Barnes, Non-Executive Director
Andrea Harms, Non-Executive Director
Gerard McMahon, Non-Executive Director

Two Leaders **ONE VISION**

DLG SHAPE is the realisation of two companies – The David Liddiard Group and SHAPE Australia. Indigenous business owner David Liddiard and SHAPE CEO, Michael Barnes are passionate about collaboration, opportunity and equality. Both experts in their respective fields, their combined knowledge, experience, and like-minded values came together in 2016 to launch DLG SHAPE.

The David Liddiard Group (DLG) founded by David Liddiard, OAM, brings proven expertise in corporate engagement with Indigenous communities and projects, including recruitment and workforce development, the delivery of construction projects and the development and implementation of Indigenous Participation Programs for corporate partners.

SHAPE Australia has been delivering fit out and refurbishment projects for 27 years. With a strong corporate culture built on a constructive and egalitarian work environment, it has robust financial and corporate credentials.

Together we share the vision of a more equitable Australia and Indigenous economic independence through employment and commercial activity.



Engaging DLG SHAPE

A typical project with DLG SHAPE begins with the end in mind. With over 55 years of combined experience, our clients benefit from the learnings and advanced thinking of two innovative leaders who are committed to achieving high Indigenous employment targets and outstanding work results.

National reach

Genuine national capability ensures consistency of delivery, which is particularly critical to national roll-out projects and property portfolios. We are able to deliver projects and engage local Indigenous workers on projects no matter the location.

Extensive industry experience and stability

SHAPE completed 333 fit out and refurbishment projects in FY16 totalling over 362,000 sqm of space. DLG has 30 years of experience of successfully transitioning Indigenous youth into employment through transition to work Pre-employment and Mentored Placement Programs. DLG has assisted over thirty industry partners in developing their RAP and IPP.

Perfect Delivery™ (PD)

A unique customer service model in the Australian construction industry. Perfect Delivery's key targets are zero defects at handover and on time completion. SHAPE achieved PD on more than 80% of its projects in FY16.

Client Experience

We believe the only way that client service can be a long term point of difference is by relentlessly measuring it and then focusing on improving it. We do this through client experience research including Net Promoter Score (NPS).



Risk Management and Corporate Governance

Through its founders, DLG SHAPE is a product of advanced risk management systems built with sophisticated, rigorous and responsible corporate governance at its core.

The place where everyone wants to work

This means by collectively attracting the best people, these same people are working for you. With access to 300+ construction and project management professionals, we provide a constructive and egalitarian work environment.

DLG has a minimum target of 10% local Indigenous engagement on every project and has recently achieved up to 85% in a remote location in SA on a construction project.

DLG SHAPE is a majority Indigenous owned partnership, owned and operated by two experienced and reputable industry leaders – The David Liddiard Group and SHAPE Australia.

DLG SHAPE VALUES

- ✓ SAFETY
- ✓ INTEGRITY
- ✓ EXCELLENCE
- ✓ INCLUSION
- ✓ CHARACTER
- ✓ INTELLIGENCE



DLG
SHAPE

Recent Projects

Christies Beach Aboriginal Children's and Family Centre



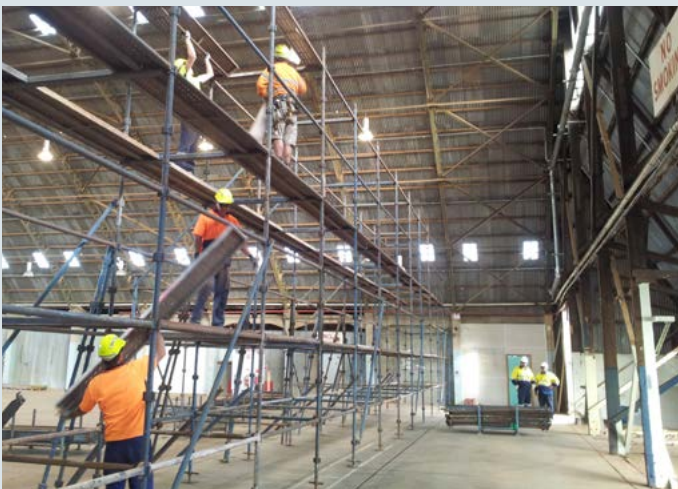
SCOPE: Delivery of a new Aboriginal Children and Family Centre as part of the existing Christies Beach Primary School.

APPROACH: The project was completed whilst the primary school remained fully operational; hence safety and continuity were paramount. The design was heavily influenced by the local Aboriginal community and artists who consulted on the project. Additionally, work experience students from the Doorways to Construction student programme and Wirreanda High School undertook various roles throughout the project.

KEY DELIVERABLES

- Certainty of Delivery
- Zero Disruption to maintain operational continuity
- Cultural Commitment and community participation
- Time and Safety critical

The Royal Australian Air Force Hangar Upgrade



SCOPE: Site team and project management services to execute the replacement of the rear wall of Hangar 1, RAAF Woomera base.

APPROACH: The original timber structure built in 1948 was termite damaged and presented a safety hazard during high wind events (often causing the airfield's closure). The hangar is also heritage listed, and meant that heritage values had to be maintained. The project team consisted of 75% local Aboriginal workers who were provided with role specific training and certification. Mentoring was provided throughout the project.

KEY DELIVERABLES

- Site and Access Security
- Heritage listed building compliance
- Exemplary Health and Safety (no LTIs, no MTIs were recorded)
- Environmental impact minimised (no environmental incidents and less than 0.5% waste disposed to landfill)

